

TITLE
**CONCEPT PLAN
 OPTION 1**
**PEARL SAMPLE & RICHARDSON
 ELEMENTARY SCHOOLS**
 LOCATED IN
 CEDAR MOUNTAIN WARDENIAL DISTRICT
 CULPEPER COUNTY, VIRGINIA

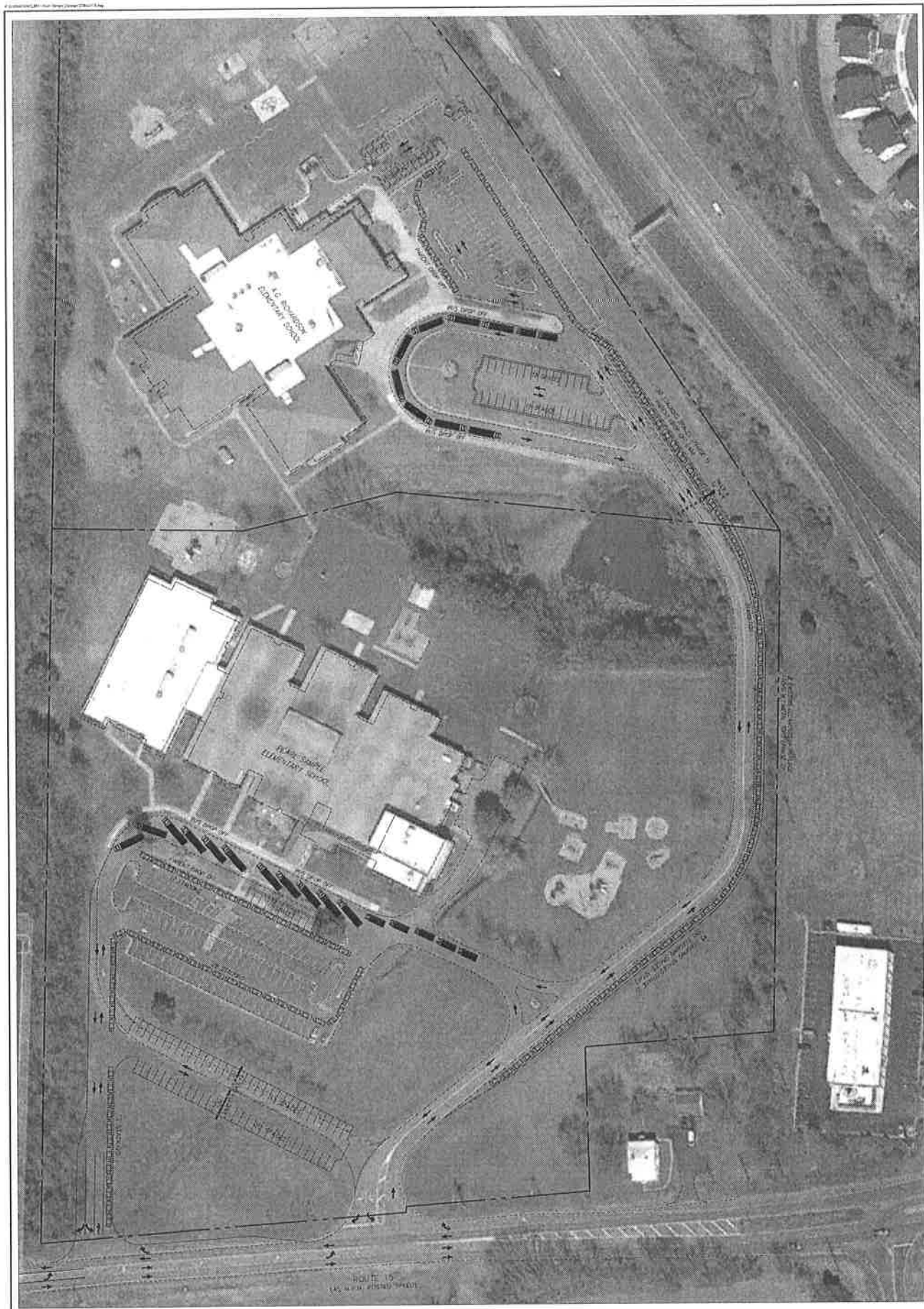
ATCS, P.L.C.
 ENGINEERING • PLANNING • SURVEYING
 937 MADISON ROAD, SUITE 107
 CULPEPER, VA 22704
 (540) 875-1363 • Fax (540) 875-1523
 Culpeper, VA • Warrenton, OR • Annapolis, MD

CLIENT
 CULPEPER COUNTY SCHOOLS
 ATTN: HUNTER SPENCER
 4152 HUNTER LANE
 CULPEPER, VA 22701
 SCALE
 1" = 50'
 0 25 50 100 150

DESIGNER
 RODDY A. REYES
 DESIGN BY
 RAR
 DRAWN BY
 LEB
 DATE
 N/A
 REVISION NO.
 N/A



NO.	DATE	NO.	DATE	PERSON



FILE
CONCEPT PLAN
OPTION 1

**PEARL SAMPLE & RICHARDSON
ELEMENTARY SCHOOLS**

LOCATED IN
CEDAR MOUNTAIN MAGISTERIAL DISTRICT
CULPEPER COUNTY, VIRGINIA

ATCS, P.L.C.
ENGINEERING • PLANNING • SURVEYING

767 MADISON ROAD, SUITE 107
CULPEPER, VA 22701
(540) 825-1389 • Fax (540) 825-1520

Dulles, Va. • Waldorf, Md. • Annapolis, Md.

CLIENT
CULPEPER COUNTY SCHOOLS
ATTN: HINTER SPENCER
850 MADISON LANE
CULPEPER, VA 22701

SCALE
1" = 50'
0 25 50 100 150

DESIGNED BY	RODOLFO A. REYES
REVISED BY	EDMUND BY
DRAWN BY	RAJ
CHECKED BY	EDMUND BY
DATE	NOV. 2014
PROJECT NO.	N/A



NO.	DATE	NO.	DATE	PERSON



SHEET 0023 OF 248
 DATE 11/11/14
**PEARL SAMPLE & RICHARDSON
 ELEMENTARY SCHOOLS**
 CONCEPT PLAN
 OPTION 2
 LOCATED IN
 CEDAR MOUNTAIN MAGISTRIAL DISTRICT
 CULPEPER COUNTY, VIRGINIA

ATCS, P.L.C.
 ENGINEERING • PLANNING • SURVEYING
 767 MADISON ROAD, SUITE 107
 CULPEPER, VA 22701
 (540) 825-1369 • Fax (540) 825-1020
 Dulles, Va. • Waldorf, Md. • Annapolis, Md.

CLIENT
 CULPEPER COUNTY SCHOOLS
 ATTN: JONTER SPENCER
 450 RADIO LANE
 CULPEPER, VA 22701

DESIGNER
 RODDY & REYES
 DRAWN BY
 RAN
 CHECKED BY
 RAN
 DATE
 NOV. 2014
 FEEDBACK NO.
 N/A



NO.	DATE	NO.	DATE	PERSON